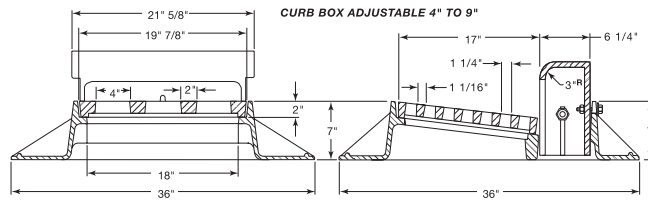


■ Note: When specifying/ordering grates, refer to "Choosing the Proper Inlet Grate" on pages 125-126.  
 For a complete listing of FREE OPEN AREAS and WEIR PERIMETERS of all NEENAH grates, refer to pages 327-332.

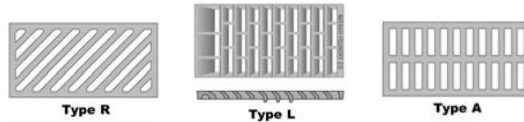
**R-3235**  
**Combination Inlet Frame, Grate, Curb Box**

Heavy Duty



CATALOG NUMBER	GRATE TYPE	SQ. FT. OPEN	WEIR PERIMETER LINEAL FEET
R-3235	C	0.7	4.5
R-3235	A	0.9	4.5
R-3235	L	0.8	4.5
R-3235	R	0.9	4.5

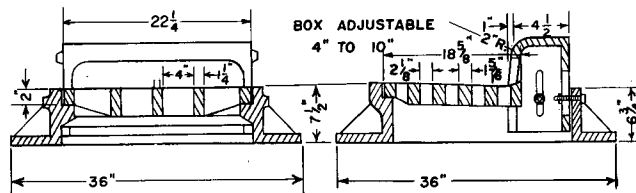
Standard Grate (shown): Type C  
 Alternate Grate(s):



COMBINATION INLETS  
3

**R-3236**  
**Combination Inlet Frame, Grate, Curb Box**

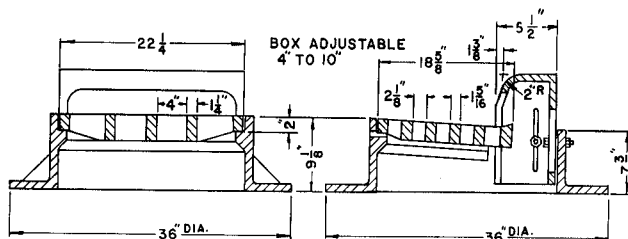
Heavy Duty



CATALOG NUMBER	GRATE TYPE	SQ. FT. OPEN	WEIR PERIMETER LINEAL FEET
R-3236	C	1.2	4.9

**R-3236-1**  
**Combination Inlet Frame, Grate, Curb Box**

Heavy Duty



CATALOG NUMBER	GRATE TYPE	SQ. FT. OPEN	WEIR PERIMETER LINEAL FEET
R-3236-1	C	1.2	4.9

Weep holes furnished standard.

Supplied By:



877-903-7246

www.trenchdrainsupply.com

CLICK HERE to return to the Table of Contents

